

HER CLIQUE

Vem de Longe

Isabella Russo Siqueira

April 24 - May 15

Her Clique Lisbon
Largo do Contador Mor 4



Exhibition essay by Adri Kuri

The exhibition *Vem de Longe* (Comes from Afar) approaches intangible heritage as something that unfolds through sensory and embodied experience, rather than fixed representation. As legacies neither individual nor immediate, but carried across distances via elemental forces, time, territory, material, memory, and migration. A framework in which the canvas becomes a terrain where bodily experience and natural processes intersect, and painting operates as a form of mapping, where the artist's body functions as a resonant site through which these forces unfold. Conceived at the close of Isabella Russo Siqueira's residency at Her Clique, the exhibition traces a cartography in which form emerges through movement, and separation gives way to exchange.

Born in Cancún, of Brazilian and Mexican-American lineages and descended from Italian migrants, Russo Siqueira recognizes her body as both a vessel and a trace of transoceanic movement. Not as something exceptional, but as part of a broader narrative shaped by migration and evolving knowledge.

In a context defined by hardened borders and fragmentation, this perspective becomes political. Migration and exchange are not anomalies but structuring conditions of the human experience, while narratives of purity and separation remain fictions sustained by power. Culture emerges from encounter, and the works are structured by it.

In dialogue with practices engaging land, history, and inscription, Russo Siqueira positions painting as a form of mapping, where gesture, material, and environment converge. Each painting begins on the ground, absorbing atmosphere (humidity, salt, soil, time) before pigment. Gravity,

humidity, and wind shape the work through exposure rather than intention. Gesture responds rather than dominates, while pigment disperses according to physical conditions.

The paintings evolve through spontaneity, responding to inner and environmental forces. What emerges is a convergence of climatic exposure, bodily repetition, and geographic displacement that exceeds the individual. Works created on the Caribbean coast travel to Europe, continuing to shift as they encounter new atmospheres. Painting remains an open process — an ongoing negotiation between body, environment, and inheritance.

Interconnectivity appears as a material condition that can be mapped onto multiple scales: from veins or nerves in a human body, to river streams or ocean currents, linked by shared logics of circulation, distribution, and exchange. In Russo Siqueira's paintings, circulation is structural: nothing remains untouched by contact, and form emerges as the record of encounter. Shaped through relations, where human (gesture) and more-than-human (surface, pigment, humidity, salt, air) forces act within a common field, the paintings originate not from a singular authorial gesture, but from a temporary configuration of territories and inheritances.

This interplay reflects transmission, framed as intangible heritage: inherited yet unstable, continuously altered by the conditions that carry it. What endures is not form, but transformation itself. Sedimentation, absorption, and migration shape the works, privileging accumulation over fixity. The surface is formed not by isolation, but by relation.

HER CLIQUE



Fragments of a Field 1/4, 2026
Mixed media on raw canvas
18 x 20 cm

EUR 500

HER CLIQUE



Fragments of a Field 2/4, 2026
Mixed media on raw canvas
18 x 20 cm

EUR 500

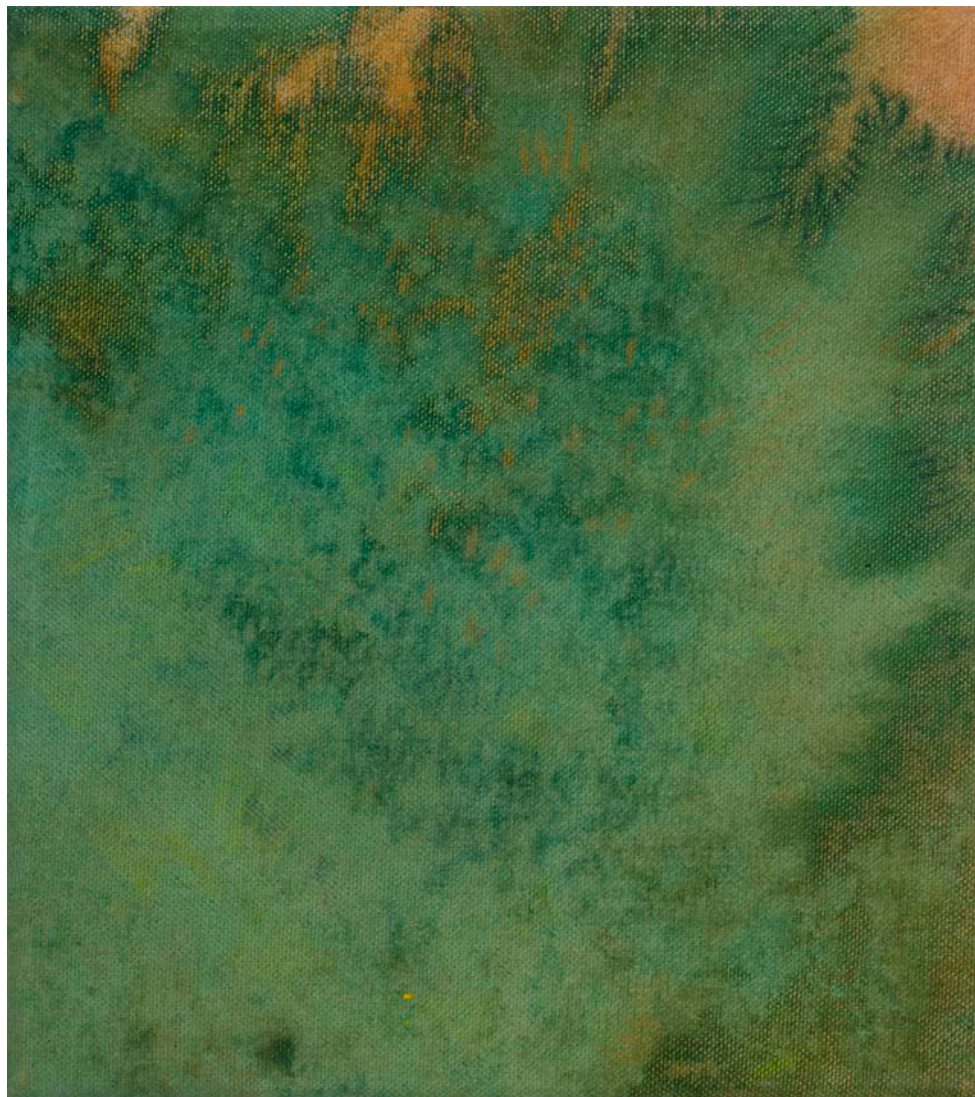
HER CLIQUE



Fragments of a Field 3/4, 2026
Mixed media on raw canvas
18 x 20 cm

EUR 500

HER CLIQUE



Fragments of a Field 4/4, 2026
Mixed media on raw canvas
18 x 20 cm

EUR 500

HER CLIQUE



HER CLIQUE





HER CLIQUE

Passing Forces 1/5, 2026
Mixed media on raw canvas
30 x 40 cm

EUR 1000

HER CLIQUE



Passing Forces 2/5, 2026
Mixed media on raw canvas
30 x 40 cm

EUR 1000



HER CLIQUE

Passing Forces 3/5, 2026
Mixed media on raw canvas
30 x 40 cm

EUR 1000



HER CLIQUE

Passing Forces 4/5, 2026
Mixed media on raw canvas
30 x 40 cm

EUR 1000

HER CLIQUE



Passing Forces 5/5, 2026
Mixed media on raw canvas
30 x 40 cm

EUR 1000



HER CLIQUE





HER CLIQUE

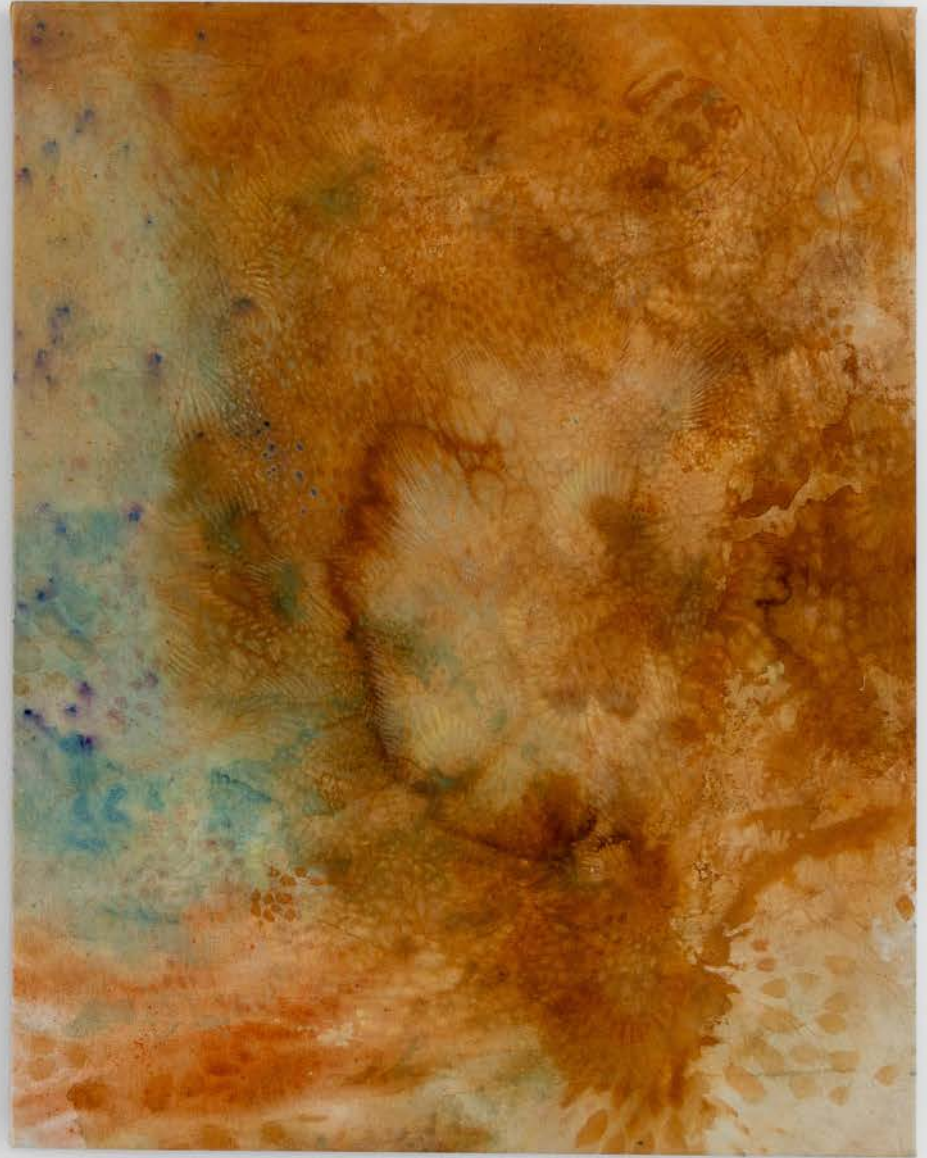
HER CLIQUE



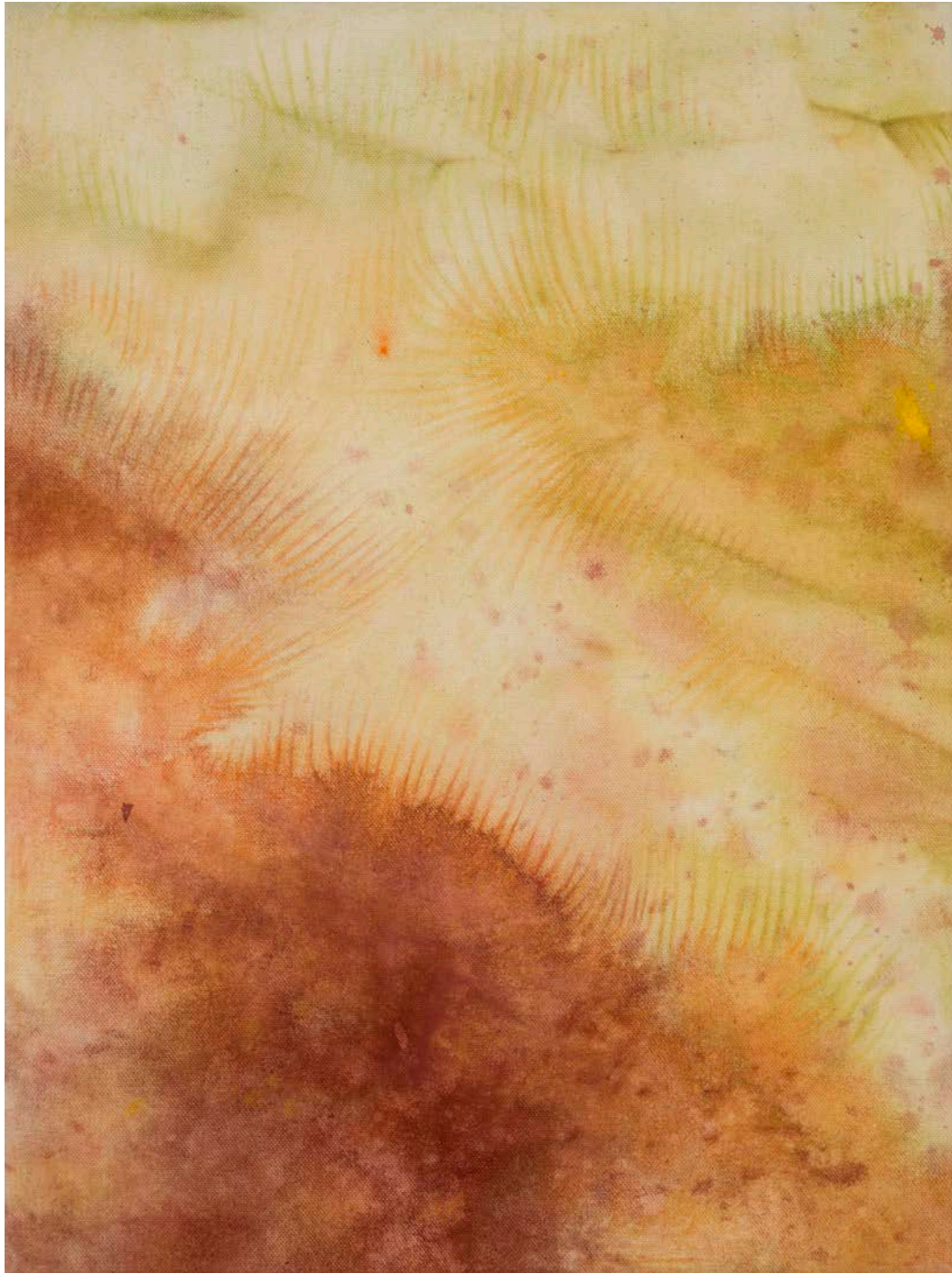
Erosion in Motion, 2026
Mixed media on raw canvas
30 x 40 cm

EUR 1000





HER CLIQUE



Solar Fern, 2026
Mixed media on raw canvas
30 x 40 cm

EUR 1000

HER CLIQUE



HER CLIQUE



Horizonte que Respira Luz, 2025
Mixed media on raw canvas
46 x 60 cm

EUR 1700



HER CLIQUE

Passage into Light, ??
Mixed media on raw canvas
46 x 60 cm

EUR 1700

HER CLIQUE





HER CLIQUE

Contact After Departure, 2026
Mixed media on raw canvas
50 x 65 cm

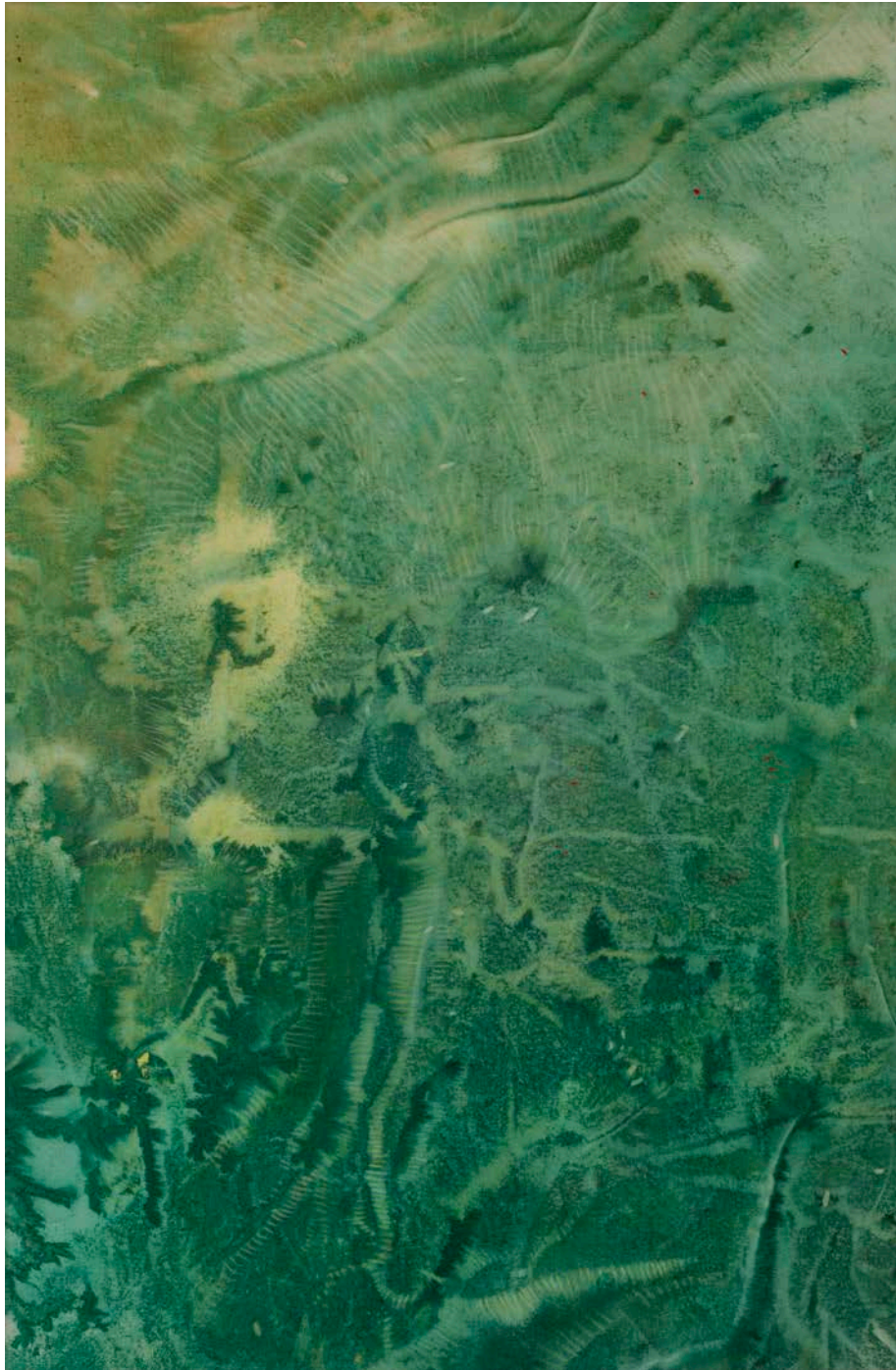
EUR 1870



HER CLIQUE



HER CLIQUE



What the Atlantic Carries, 2026
Mixed media on raw canvas
92 x 60 cm

EUR 2640

HER CLIQUE



Converging Terrains, 2026
Mixed media on raw canvas
92 x 60 cm

EUR 2640



HER CLIQUE



Cartographic Movement, 2025
Mixed media on raw canvas
90 x 70 cm

EUR 2810



HER CLIQUE

HER CLIQUE

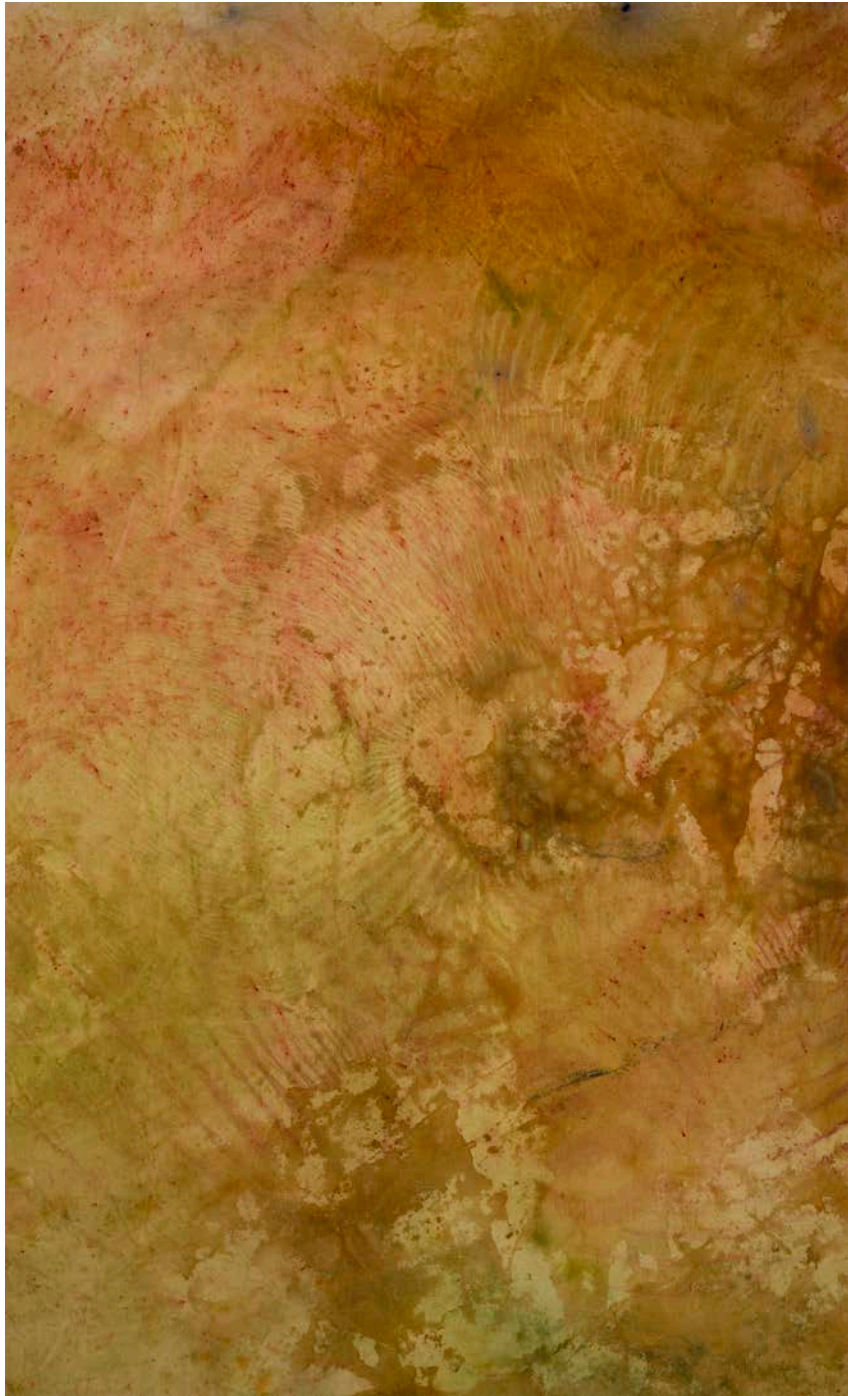


Luz Sumergida, 2025
Mixed media on raw canvas
90 x 70 cm

EUR 2810



HER CLIQUE



Cartographic Memories, 2025
Mixed media on raw canvas
73 x 120 cm

EUR 3400

HER CLIQUE



HER CLIQUE



Wind Holds the Form, 2026
Mixed media on raw canvas
118 x 160 cm

EUR 4850

HER CLIQUE

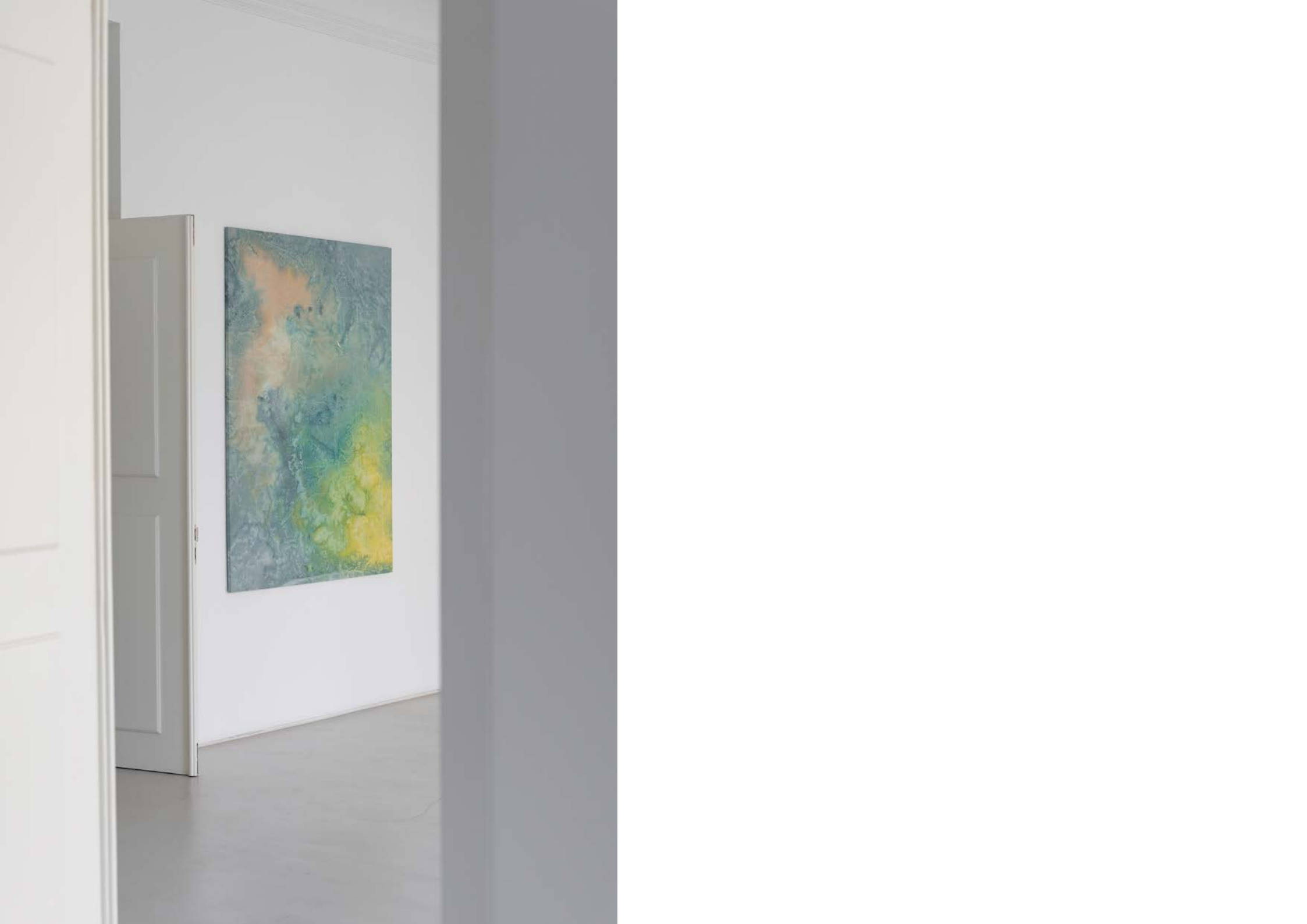


HER CLIQUE



De lo Alto a lo Profundo, 2025
Mixed media on raw canvas
130 x 160 cm

EUR 5020



HER CLIQUE





HER CLIQUE

Unfolding Presence, 2026
Mixed media on raw canvas
130 x 170 cm

EUR 5100

HER CLIQUE



The image shows an abstract painting with a textured surface. The color palette is dominated by various shades of green, ranging from light, pale greens to deep, forest greens. Interspersed throughout are patches of a muted, dusty blue. The texture is highly visible, with numerous fine, parallel ridges and grooves, suggesting the use of a palette knife or a similar tool to create the surface. The overall effect is one of organic, layered growth or perhaps a microscopic view of a natural material. The lighting is even, highlighting the three-dimensional quality of the paint application.

HER CLIQUE

Levitated in Time, 2026
Mixed media on raw canvas
130 x 200 cm

EUR 5440



HER CLIQUE

If you are interested in purchasing any of the pieces
please contact iza@herclique.com or ashley@herclique.com